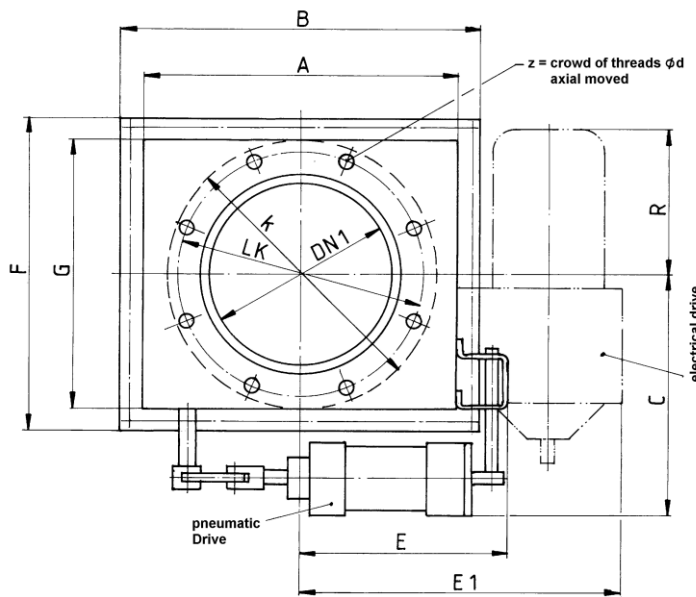
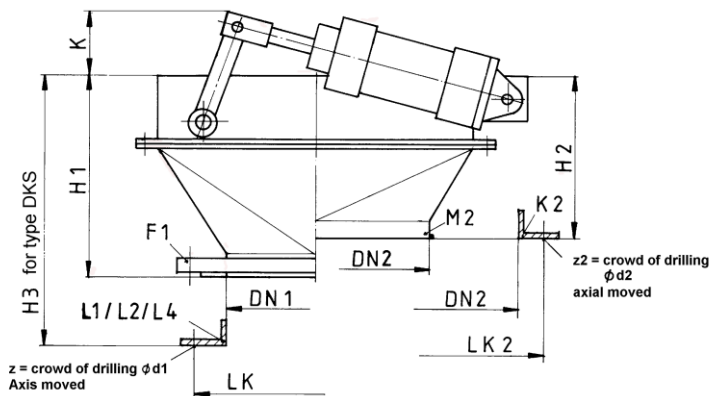


Casing Type rectangular



design of cone			
Flap Shutter Type KV...E Table 2			
M1	sleeve connection	H1	DN1
M2	sleeve connection	H2	DN2
K1	small flange	H1	DN1
K2	small flange	H2	DN2
L1	small flange for double Flap-slucies	H3	DN1
L4	see data sheet-No: 100-413 Bl. 1		
F1	DIN-flange ND 10, lose flange similar DIN 6242	H1	DN1
F2	DIN-flange ND 10,, lose flange similar DIN 6242	H2	DN2

casing design type: E rectangular											H1		design height H2					
DN1	DN2	A	B	C	E	F	G	K	LK	k	d	z	H1	d1	H2	LK2	d2	z2
100	150																	
150	200	280	340	207	275	330	270	84	190	210	M 8	4	250	9	205	250	9	4
200	250	380	430	245	325	340	290	73	250	270	M 8	4	350	9	280	300	9	8
250	300	450	510	345	425	480	420	120	300	320	M 8	8	390	9	350	350	12	8
300	350	530	590	340	360	490	430	130	350	370	M10	8	490	12	425	400	12	8
400	500	720	780	440	400	640	580	222	450	480	M10	8	600	12	495	570	14	12
500	600	920	990	570	790	870	800	370	570	600	M12	12	730	14	650	670	14	12
600	700	1100	1208	730	1000	1068	960	350	700	800	M12	16	885	14	820	770	14	16

measure possible for change

DN1	weight. ca. Kg	to 6 bar pressure air			electrical Drive				
		Close- forces N	pressure bar	Air- consumption NI/Spiel	E1	R	weight. kg	speed U/min	Power kW
100									
150	15	753	0,426	1,30	305	235	27	27	0,18
200	24	1120	0,357	2,53	360	225	38	21	0,25
250	56	2545	0,520	8,38	465	160	70	21	0,25
300	57	2550	0,361	8,38	435	155	68	21	0,25
400	96	4350	0,346	21,40	525	150	116	20	0,37
500	223	9600	0,490	53,20	735	90	231	19	0,55
600									